

## Half Hill Farm

WA 99201  
halfhillfarm@gmail.com  
(615) 556-9331  
Lic. #

## Sample: 02TRC011819.C0883

Strain: Half Hill Farm

Sample Received: 02/28/2019; Report Created: 03/04/2019  
Leaf Inventory/Lot ID: ; Leaf Pre-Transfer Inventory/Lot ID:  
Leaf Batch ID: ; Leaf Pre-Transfer Batch ID:  
Leaf Manifest ID:

## Half Hill Farm Sample A

Concentrates & Extracts, Full Extract Cannabis Oil, CO2  
External Batch ID: CBD021519-500



**0.23  
mg/g**

THC Potency

**37.00  
mg/g**

CBD Potency

**37.23  
mg/g**

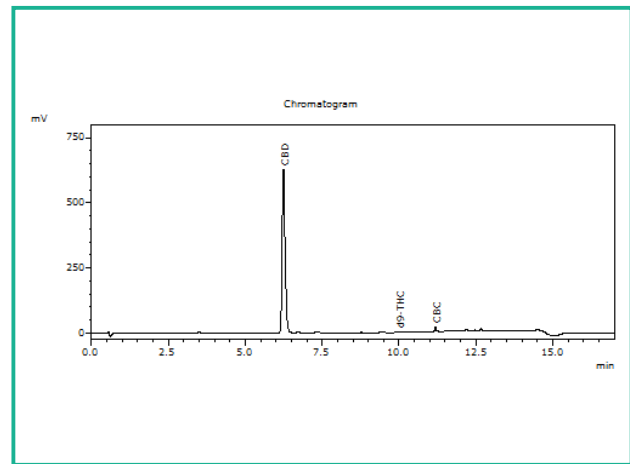
Total Potency\*

## Cannabinoids

1 Unit = Bottle, 13.38g

Analyte	Mass mg/g	Mass %
THCa	ND	ND
Δ9-THC	0.23	0.023
CBD	37.00	3.700
CBDa	ND	ND
CBN	ND	ND
Δ8-THC	ND	ND
CBDV	ND	ND
CBG	ND	ND
CBGa	ND	ND
CBC	0.21	0.021
<b>Total</b>	<b>37.44</b>	<b>3.744</b>

## Chromatogram



THC Potency = THCa \* 0.877 + d9-THC; CBD Potency = CBDa \* 0.877 + CBD; LOQ = Limit of Quantitation; Total Potency\* = Total THC + Total CBD. Unless otherwise stated all quality control samples performed within specifications established by the Laboratory.

908 N. Howard St., Suite 101  
Spokane, WA  
(509) 284-7522  
<http://traceanalytics.com/>  
Lic# 0014

*Sara Minier*  
Sara Minier  
Senior Scientist

Confident Cannabis  
All Rights Reserved  
support@confidentcannabis.com  
(866) 506-5866  
[www.confidentcannabis.com](http://www.confidentcannabis.com)



This product has been tested by Trace Analytics, Inc using valid testing methodologies and a quality system as required by state law. Values reported relate only to the product tested. Trace Analytics, Inc makes no claims as to the efficacy, safety or other risks associated with any detected or non-detected levels of any compounds reported herein. This Certificate shall not be reproduced except in full, without the written approval of Trace Analytics, Inc. Lic# 0014 - Foreign Matter (Visual Inspection) - Moisture (Moisture Analyzer) - Water Activity (Water Activity Meter) - Microbiological (3M Petrifilm/qPCR) - Potency (HPLC-UV) - Residual Solvents (GCMS) - Mycotoxins (ELISA)